

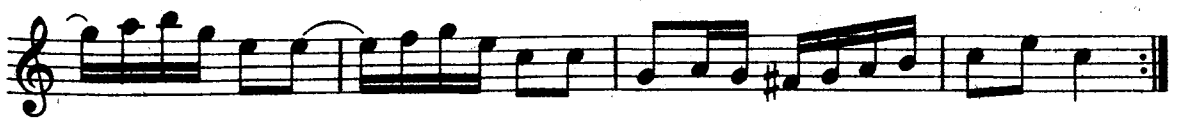
# Bjärträ.

Samuel Norman.

## Kadriljer.

1.

2.



4.

*tr* *tr* *tr* *tr*

*Fine.*

*D. C. al Fine.*

5.

*^* *^* *^* *^* *^* *^* *^* *^* *^* *^* *^* *^* *^* *^*

*1.* *2.*

*Fine.*



*D.C. al Fine.*

8. <sup>a)</sup>

9.

1. 2.

1. 2.

10.

*Fine.*

*D.C. al Fine.*

Angläser ("Polkettfyror").

1.

*Fine.*

*D.C. al Fine.*

2.

Musical score for a piece in G major, 2/4 time. It consists of four staves of music. The first staff begins with a treble clef, a key signature of one sharp (F#), and a 2/4 time signature. The melody is written in a single line. The second and third staves contain repeated rhythmic patterns with trills (tr) and slurs. The fourth staff concludes the piece with a double bar line and repeat dots.

## Marsch.

Musical score for a piece in G major, 2/4 time. It consists of five staves of music. The first staff begins with a treble clef, a key signature of one sharp (F#), and a 2/4 time signature. The melody is written in a single line. The second and third staves contain repeated rhythmic patterns with trills (tr) and slurs. The fourth and fifth staves continue the piece with similar rhythmic patterns, ending with a double bar line and repeat dots.

## Polskor.

1.

Musical score for a piece in B-flat major, 2/4 time. It consists of three staves of music. The first staff begins with a treble clef, a key signature of two flats (Bb, Eb), and a 2/4 time signature. The melody is written in a single line. The second and third staves contain repeated rhythmic patterns with trills (tr) and slurs. The piece ends with a double bar line and repeat dots.









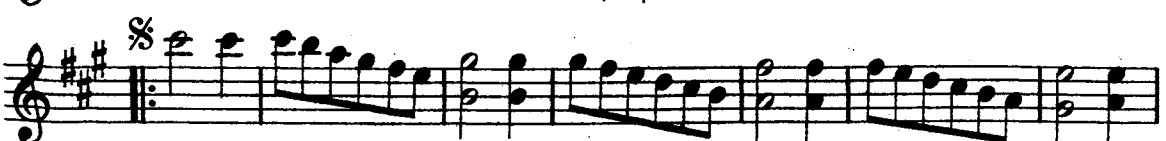
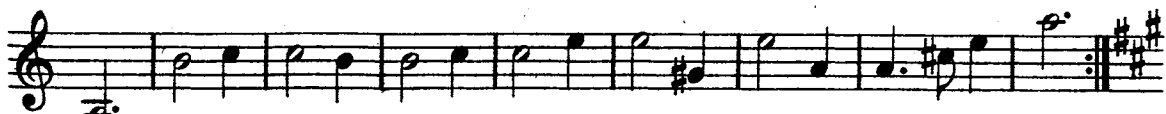
3.

4.

1. 2.

1. 2.

Detailed description: The image shows two musical exercises, numbered 3 and 4. Exercise 3 is a 10-staff piece in 3/4 time with a key signature of two flats (B-flat and E-flat). It begins with a treble clef and a common time signature. The first staff contains a melodic line with eighth and sixteenth notes, followed by a series of chords. The second staff continues the melodic line with accents (^) over several notes. The third staff features a more complex rhythmic pattern with eighth and sixteenth notes. The fourth staff includes a repeat sign and a fermata. The fifth staff has a melodic line with a fermata. The sixth staff begins with a repeat sign and a key signature change to one flat (B-flat). The seventh staff continues the melodic line. The eighth staff has a melodic line with a fermata. The ninth staff has a melodic line with a fermata. The tenth staff has a melodic line with a fermata. Exercise 4 is a 6-staff piece in 3/4 time with a key signature of two flats. It begins with a treble clef and a common time signature. The first staff contains a melodic line with eighth and sixteenth notes. The second staff continues the melodic line with a fermata. The third staff has a melodic line with a first ending (1.) and a second ending (2.). The fourth staff has a melodic line with a fermata. The fifth staff has a melodic line with a first ending (1.) and a second ending (2.), and accents (^) over several notes. The sixth staff has a melodic line with a fermata.



*Fine.*

*D. S. al Fine.*



7.

### Vallmelodi.

a)

b) Portamento. c) Raskt.

d) e) 1 f) Portamento. g) Raskt.

Kadriljer.

1.

2.  $\text{B}\flat$  major, 2/4 time. The piece begins with a melodic line in the right hand and a rhythmic accompaniment in the left hand. It features several measures of eighth-note patterns and a triplet of eighth notes. The piece concludes with a first ending and a second ending.

3.  $\text{D}$  major, 2/4 time. The piece begins with a melodic line in the right hand and a rhythmic accompaniment in the left hand. It features several measures of eighth-note patterns and a triplet of eighth notes. The piece concludes with a first ending and a second ending.

4. 

5. 



6.

1. 2.

1. 2.

Kadriljpolka.

1. 2.

Polskor.

1. 



2. 



3. 

4. 

5. 

6. 

7. 

8.

Exercise 8 consists of 12 measures in 3/4 time, key of D major. The first measure is marked with a large '8.'. The piece features a melodic line with eighth and sixteenth notes, often beamed together. A triplet of eighth notes appears in measure 4. A repeat sign with first and second endings is used in measures 10 and 11. Measure 12 ends with a double bar line and repeat dots. A '+' sign above a note in measure 11 indicates an optional variation.

9.

Exercise 9 consists of 12 measures in 3/4 time, key of D major. The first measure is marked with a large '9.'. The piece features a melodic line with eighth and sixteenth notes, often beamed together. A triplet of eighth notes appears in measure 1. A repeat sign with first and second endings is used in measures 10 and 11. Measure 12 ends with a double bar line and repeat dots. A '+' sign above a note in measure 11 indicates an optional variation.

10.  Musical score for exercise 10, measures 1-4. The first staff is in 3/4 time with a key signature of one sharp (F#). It begins with a triplet of eighth notes (F#, G, A) followed by a series of eighth and sixteenth notes. The second staff continues the melody with a repeat sign and a fermata. The third staff features a first ending (marked '1.') and a second ending (marked '2.').

11.  Musical score for exercise 11, measures 1-4. The first staff is in 3/4 time with a key signature of one sharp (F#). It features a steady eighth-note melody. The second staff includes a repeat sign and a fermata. The third staff continues the eighth-note pattern.

12.  Musical score for exercise 12, measures 1-4. The first staff is in 3/4 time with a key signature of one sharp (F#). It starts with a triplet of eighth notes (F#, G, A) followed by eighth notes. The second staff continues with eighth notes and includes a repeat sign and a fermata.

13.  Musical score for exercise 13, measures 1-4. The first staff is in 3/4 time with a key signature of two flats (Bb, Eb). It features a steady eighth-note melody. The second, third, and fourth staves continue the eighth-note pattern.

14. 

14<sup>a</sup> 

## Valses.

1. 







2. 

















3.

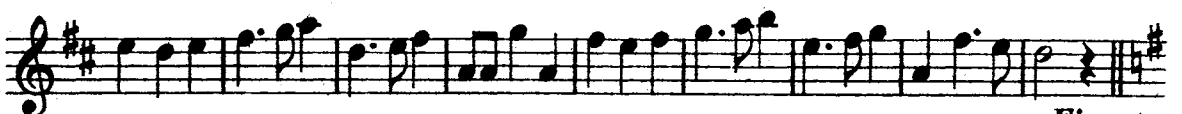
Musical score for a piece in 3/4 time, key of D major. The score consists of 12 staves of music. It begins with a treble clef, a key signature of one sharp (F#), and a 3/4 time signature. The music features a variety of rhythmic patterns, including eighth and sixteenth notes, and rests. There are several trills and triplets marked with a '3' and a slur. A first and second ending are indicated by '1.' and '2.' above a repeat sign. The piece concludes with a final cadence.

4.

Musical score for exercise 4, measures 1-6. The key signature has two flats (B-flat and E-flat), and the time signature is 3/4. The piece features a melodic line with eighth and sixteenth notes, including a triplet of eighth notes in measure 2. Measure 3 contains a repeat sign with first and second endings. Measure 4 has a repeat sign with a first ending. Measure 5 has a repeat sign with a first ending. Measure 6 ends with a repeat sign and a double bar line.

5.

Musical score for exercise 5, measures 1-6. The key signature has two sharps (F-sharp and C-sharp), and the time signature is 3/4. The piece features a melodic line with eighth and sixteenth notes, including a triplet of eighth notes in measure 2. Measure 3 contains a repeat sign with first and second endings. Measure 4 has a repeat sign with a first ending. Measure 5 has a repeat sign with a first ending. Measure 6 ends with a repeat sign and a double bar line.



*Fine.*

*D. C. al Fine.*

### Hyfsor.

1.

*Fine.*

*D. C. al Fine.*

2.

*Poco più lento.*

## Polketter.

1.  O. S. V.

2. 



3. 

